



ColorGATE **PRODUCTION** SERVER⁴

The universal RIP solution!

- The universal production RIP
- Easy to use software
- Can be expanded in modular form
- Supports a wide range of large and wide format printing systems



ColorGATE



Software Packages for Beginners and Pros

The **PRODUCTIONSERVER⁴** is available from **ColorGATE** in three different packages. **PRODUCTIONSERVER⁴ RASTER** and **SELECT** both provide the following standard functions. **RASTER** only processes raster data such as TIF, JPG, etc.; **SELECT** is capable of processing additional formats such as EPS, PS and PDF. Each can be combined with the **PRO** functions and modules available as optional extras.

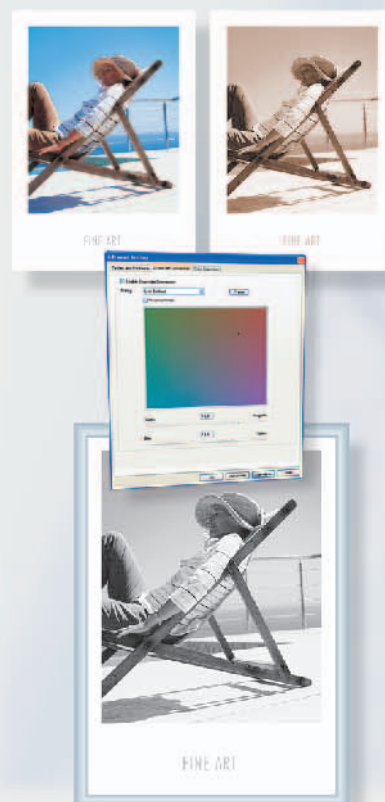
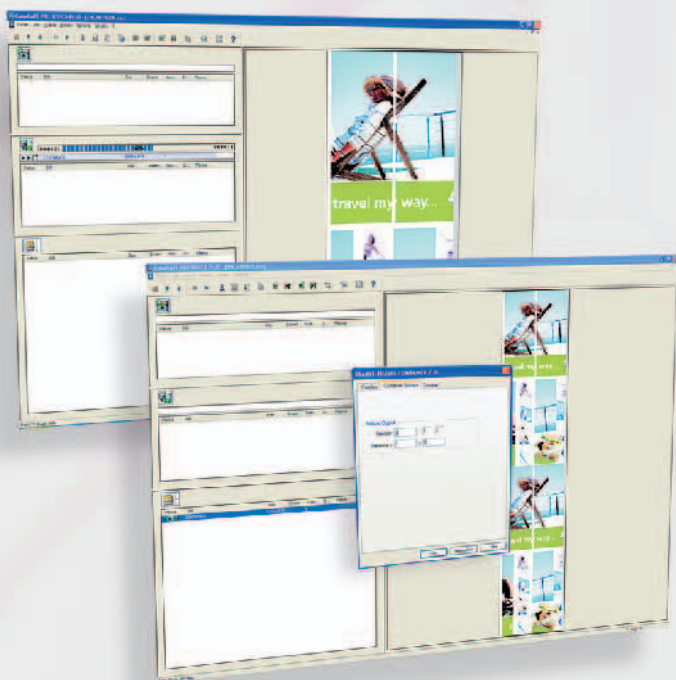
PRODUCTIONSERVER⁴ RASTER/SELECT is the economical entry level variant as a first step into the professional Print for Pay market. This solution can be complemented with the **PRO** package features at any time. Apart from the major working functions such as rotating, mirroring, copying, centering, duplicating, cropping and previewing, cutting marks, information text and free text, this package also includes:

- 1 supported printer / 1 RIP and Printer Queue
- ICC color management (CMYK)
(Numerous ICC profiles are included)
- 1 Hotfolder (integrated in the user interface)
- **AUTO TILING**
- MIM Administration: Load **ColorGATE** Media Packages (*.cgm) and media-, ink and reference (MIM) profiles (MIM import to use ICC linearization)

PRODUCTIONSERVER⁴ PRO is the universal high-end production tool for those supplying LFP goods and services, and contains a complete set of production tools.

This software package includes:

- 2 supported printers (operable in parallel)
- 2 RIP and print queues
- Multicolor ICC engine (CMYK and up to 11 further color channels, e.g. orange or green)
- Unlimited Hotfolders (integrated in the user interface)
- Auto and variable tiling with intelligent materials use for cost-efficient operation
- Container, Multi-page Container, Hot Container for automatic, media-optimized arrangement of several jobs on one printed sheet
- Copy Container, Container Copy: processing and output of as many Containers/copies as desired
- Tiling Container, for optimal materials used in tiling jobs
- Editing, copying and exporting of media, ink and reference profiles (MIM administration)
- Spectral linearization
- Linearization synchronization
- TWAIN interface for direct use of TWAIN-capable scanners and digital cameras
- Spot colors: as many freely defined color replacement tables as desired (RGB, CMYK, Spot -> CMYK, LAB) HKS™ tables are included; Pantone® tables are optional.
- Expanded color correction (gradation, brightness, contrast) with visual soft proof checking.
Pipette tool to support image preview before correction, after correction
- Printout of documents during ripping



Functions

Despite its simple and easily user interface **PRODUCTIONSERVER4** offers comprehensive options so that you can integrate it into your workflow to support your daily business efforts. With the aid of our freely definable containers you can process documents and other materials simultaneously, saving time and effort both.

Just need to print a single label in a small quantity or illustrate an entire skyscraper wall? No problem, as the available modules and functions enable you to handle any challenge.

When we develop new tools or update existing ones we always keep your everyday digital production problems in mind so that we can always offer you efficient and practical solutions.

PRODUCTIONSERVER4 PRO with the "Tiling Container" function has the ability to automatically combine panels of differing widths. Using this innovative function you can now utilize the materials at hand more efficiently and hence save a lot of money.

You can work just as cost-effectively with additional modules, such as the Photo & Fine Art Module, for example, which includes many innovative and time saving functions that significantly increase your competitiveness.

Photo & Fine Art

With the optional Photo & Fine Art Module you can add a number of useful functions to your **PRODUCTIONSERVER4**, such as automatic conversion of any kind of image data to neutral or toned grayscale images. In addition, the ambient light compensation function lets you produce images perfectly attuned to the light conditions where you make your presentation destination.

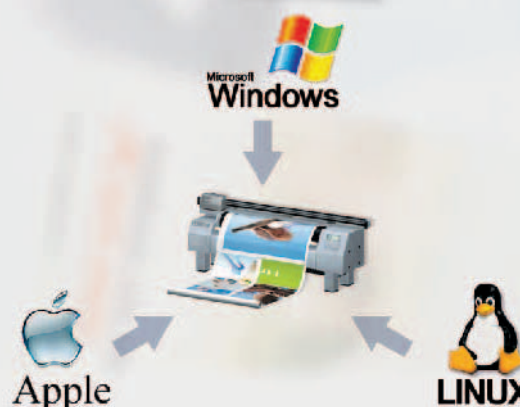
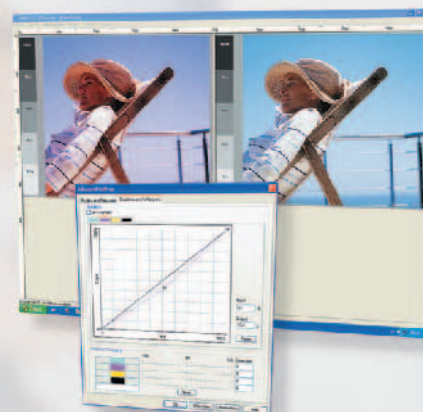
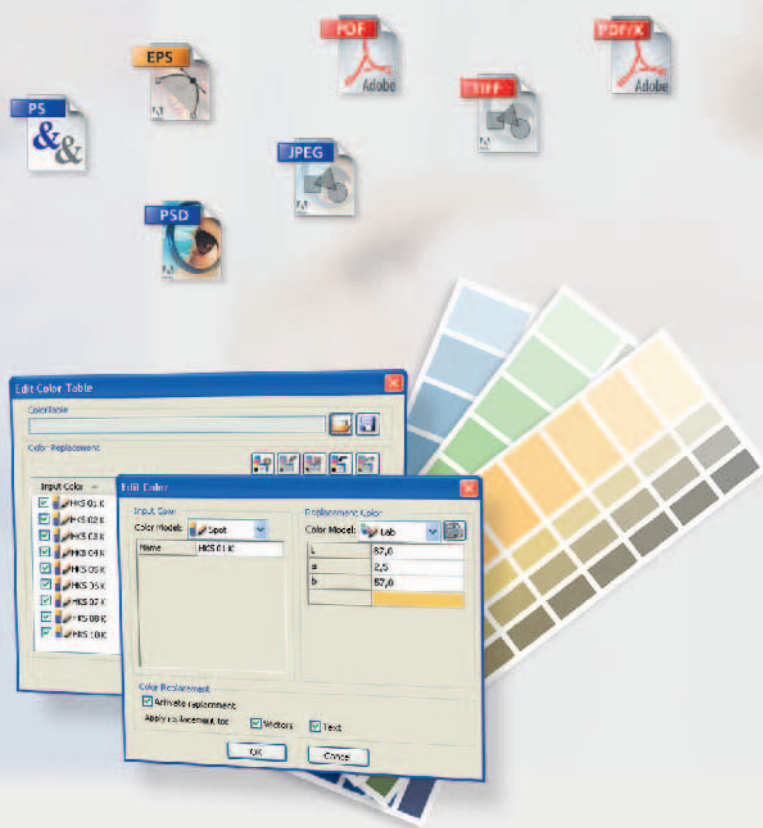
For fine-tuning or retouching – and with just one click on the **PRODUCTIONSERVER4** – you can open the image in your preferred picture editing software. Once you have completed the image corrections they are automatically updated in **PRODUCTIONSERVER4**.

The contact sheet function is also useful as it supports the EXIF Standard and produces informative contact prints, whose layout, content and size you can determine as you wish.

Simple but effective

Apart from the usual standard tools for large-format printing such as cropping, tiling and cutting and scaling of documents, **PRODUCTIONSERVER4 PRO** also offers a means of visual scaling.

This allows you to adjust any document visually to the proportions of any other and thus determine the scaling factor in output.



Variable File Types

The software functions with all standard print production file formats such as PostScript 3, EPS, TIFF, JPEG, PDF and DCS 2.0, even if separate. Multi-page PDF and PS files as well as PDF/X-1a and PDF/X-3 formats are fully supported.

Parallel Production

With **PRODUCTIONSERVER⁴** differing printing systems can be adapted to one another. You can work on the same project in using different printers at a time. That's why **ColorGATE** integrated their trend setting linearization synchronization feature in the software. You simply print out the supplied linearization chart and measure it using spectrophotometer such as Eye-One. The software does the rest - automatically. This means the new staff members in your company can be efficient and productive from the beginning without special knowledge.

Spot Colors

PRODUCTIONSERVER⁴ allows you to save and manage as many spot colors as you like via input of CMYK or laboratory values or direct calibration via spectral photometer, e.g. Eye-One. The HKS™ replacement tables are included in the software package.

Infinitely flexible

Dynamic PPD production from the RIP-Server. You can print out your documents direct via PortMonitor regardless of format. The PortMonitor works like a virtual printer and guarantees simple control in all working environments including Mac, Unix and Linux. Scanners can be interfaced direct by **PRODUCTIONSERVER⁴ PRO** without any additional software.

Color Replacement

Clients often approach us with data containing fonts in the wrong color or a bright, spot color logo which was created in CMYK. With its color replacement utility, **ColorGATE** created a function that lets you solve this problem easily and efficiently on site without having to change the supplied data.

Soft Proof Preview

The **PRODUCTIONSERVER⁴** offers a split preview with before-and-after display for simple visual color monitoring and adjustment. The soft proof function gives you a quick concrete impression of the graphic material by simulating an ICC link.



Profiler Module

The profiler module gives you a means of generating ICC profiles straight from the software without needing expert knowledge. A linearization assistant guides you through all the relevant settings and thus makes it possible to achieve professional and reliable results. What used to only be possible using expert knowledge, expensive software and a lot of time and money is now feasible at an attractive cost-benefit ratio.

Screen Module

Generate screen printing films with your LFP printer. This module allows you to generate autotypically screened printing films for screen printing purpose. You don't need any chemistry, exposure unit or extra money which means you can profit from completely new service areas. (Maximum screen frequency depends on the printer used).

Photo & Fine Art Module

Now you can produce neutral grayscale images with this module just as easily as individual color effects. Plus, gray balance optimizing is now possible, if the linearizing workflow is available via the Profiler Module. A color tuner that compensates for ambient light, contact prints incl. EXIF information and direct access to external picture editing software, are further highlights of this module.

Proofing Module

This module complements your workflow by adding a legally binding proofing solution with a licensed FOGRA media wedge. It includes special evaluation and reporting functions developed to FOGRA and bvd m specifications as well as ECI Media Standard Printing recommendations.

The integrated FOGRA media wedge can be printed out with every proof. This control strip can be input using a spectrophotometer and checked using the evaluation software included for adherence to standards. Apart from the usual printing specifications adherence to individual in-house standards can also be checked in this way and a proof report automatically printed.

FotoFusion Module

Innovative front-end for easy and creative ways of presenting digital image data for individual or predefined photo collages, layouts, backdrops, and lots more besides.

Additional Queues

Expand your **PRODUCTIONSERVER⁴** by adding a RIP and a Printer Queue to increase your productivity. With just single software RIP you can print to 6 printers simultaneously.

Supported Printers

Manufacturer	Printer	Category*	Manufacturer	Printer	Category*	Manufacturer	Printer	Category*
BeDigital	SolBeJet	I	HP	DesignJet	I	Tiara	SignMaker LP53	I
	URIBE 250	II		DesignJet-10_20_50PS	I		SolventJet CP52	I
Canon	i9950	I		DesignJet-100	I		SolventJet II SC540	I
	W2200	I		DesignJet-105xC	I		SolventJet II SC540 X	I
	W6200 Pigment PB	I		DesignJet-120	I		SolventJet II SJ540-740	I
	W7200 PB	I		DesignJet-130	I		SolventJet II SJ540-740 X	I
	W7250 PB	I		DesignJet-2x00CP	I		SolventJet X21	I
	W8200 PB	I		DesignJet-30	I		Tourmaline	I
	W8200 Pigment PB	I		DesignJet-3x00CP	I	VIP	Euros 36	I
ColorGATE	Rasterfile	I		DesignJet-45xC	I		Euros 43-62	I
	Windows Printer	I		DesignJet-500+800	I		Permasol	I
DGI	OJ-62	I		DesignJet-5000C	I		Permasol-S	I
	OJ-62D	I		DesignJet-5000-UV	I	Vutek	UltraVu 2360/3360	III
	VT-92/REX-62	I		DesignJet-5500	I	Witcolor	JETPOSTER	I
	VT-II/VT-100D	I		DesignJet-5500-UV	I	Xerox	X2	II
		I		DesignJet-75xC	I	Yaselan	YSL-D3500	II
		I		DeskJet-2500C	I		YSL-D2300 (Thunderbird)	II
Eastech	IO-6200	I	Gandinnova.	JETi	III	ZBE	Chromira	II
	IO-6400	I		JETi UV Flatbed	III	Zund	UVjet 215	III
	IO-8700	I					UVjet 250	III
	UV6440e	I	Grapo	Octopus (32Bit-TIFF)	III			
	UV8740e	I		Octopus	III			
	UV6420s	II	Keundo	SupraQ	II			
	UV6440s	II	L & P D.T.	VIRTU	III			
	UV8720s	II	Mimaki	JV-1300	I			
	UV8740s	II		JV2-130	I			
ENCAD	CADJET-T200	I		JV22-130/160	I			
	Chroma24	I		JV22-250	II			
	NovaJet	I		JV3	I			
	NovaJet-1000i	I		JV3-160 SP	I			
	NovaJet-500	I		JV3-250 SP	II			
	NovaJet-630	I		JV4	I			
	NovaJet-700	I	Mutoh	Albatros	I			
	NovaJet-850	I		RJ-4000	I			
	NovaJet-880	I		RJ-4100	I			
	NovaJet-PRO-600e	I		RJ-6100	I			
	NovaJet-PROe	I		RJ-8000	I			
	VinylJet-36	I		Rockhopper	I			
Epson	Stylus-3000	I		Rockhopper II	I			
	Stylus-Ph. 2100-2200 HTM	I		Toucan PJ-1614NX	II			
	Stylus-Ph. 2100-2200 Scr.	I		Toucan PJ-1626/2216NX	II			
	Stylus-Pro 10000	I		Toucan PJ-1634/2234NX	II			
	Stylus-Pro 10000 CF	I		Toucan PJ-2646NX	II			
	Stylus-Pro 10000 HTM	I	Neolt	NeoltJet	III			
	Stylus-Pro 10000 CF HTM	I	NUR	Fresco	III			
	Stylus-Pro 10600 Non-HTM	I		Tempo	III			
	Stylus-Pro 10600 Screen	I		Ultima	III			
	Stylus-Pro 10600 DYE HTM	I	Richmond Gr.	DirectJet-CTS	I			
	Stylus-Pro 10600 UC HTM	I	Roland	CJ400-500	I			
	Stylus-Pro 4000 Non-HTM	I		CJ540	I			
	Stylus-Pro 4000 HTM	I		CJ540 X	I			
	Stylus-Pro 4000 Screen	I		FJ540	I			
	Stylus-Pro 5500	I		FJ540 X	I			
	Stylus-Pro 7000-9000	I		SC540	I			
	Stylus-Pro 7500-9500	I		SC540 X	I			
	Stylus-Pro 7600 Non-HTM	I		SJ540	I			
	Stylus-Pro 7600 HTM	I		SJ540 X	I			
	Stylus-Pro 7600 Screen	I		SJ740	I			
	Stylus-Pro 9600 Non-HTM	I		SJ740 X	I			
	Stylus-Pro 9600 HTM	I		SolJet	I			
	Stylus-Pro 9600 Screen	I		SP-300	I			
Fey Yeung Union	Infiniti FY6150	I		SJ1000X	I			
	Infiniti FY6180/6250/8180/8250	I		CammJet	I			
	Infiniti FY6180II/6250II	I		HiFiJet (FJ 50/52)	I			
	Infiniti FY6250SL/6320SL	I		HiFiJet PRO (FJ 500/600)	I			
	Infiniti FY6320LQ	I	Scitex Vision	GrandJet - XLjet	III			
	Infiniti FY8180II/8250II/8320/8250A/3308B	I	Seiko	IP-4010	I			
	Infiniti FY8250III	I		IP-4500	I			
	Infiniti FY8250SL/8320SL	I		IP-4500 Mark2	I			
	Infiniti FY8250C/8320C	I		SIIT IP-6500	I			
	Infiniti FY3308C/8250C+	I		SIIT IP-6600 (ColorPainter 64S)	I			
	Infiniti FY3212C/3312C	I	Teckwin	TeckJet 1800s/2500s	I			
	Infiniti FY1808C/8180C	I		TeckPro 3200s	I			
	Infiniti FY1504C	I	Tiara	Opal	I			
Graphtec	SignJet-PRO	I		Opal II	I			
HMDT	Pro-Jet	III		Opal-46	I			
	Ultra-Jet	III		Sapphire	I			
	Q-Jet	III						
	Q-Jet+	III						



Technical Facts

PRODUCTIONSERVER⁴ BASIC EQUIPMENT (RASTER, SELECT & PRO)

Operating Systems	<ul style="list-style-type: none"> Windows 2000/XP/2003 (Copying of data from MacOS/Unix/Linux via ColorGATE PortMonitor)
File Types	<ul style="list-style-type: none"> Automatic file format recognition PostScript 3, PDF 1.4, PDF/X (-1a and -3), EPS, JPEG, TARGA, TIFF, BMP, PCD, PSD, DCS 2.0, etc. (RASTER only raster formats) Multi-page PDF and PostScript
Interfaces	<ul style="list-style-type: none"> Parallel, Ethernet, TCP/IP, ECP, USB, Serial, SCSI*, Firewire* (*Depending on printer)
Languages	<ul style="list-style-type: none"> Chinese, Danish, Dutch, German, English, Finnish, French, Italian, Japanese, Korean, Norwegian, Portuguese, Russian, Spanish, Turkish
Color Management	<ul style="list-style-type: none"> CrossColor ICC-Engine ICC-Color Management, ICC profiles included in the scope of delivery Support of the following Rendering Intents: <ul style="list-style-type: none"> Standard Rendering Intents (photographic, relative colorimetric, absolute colorimetric, saturation) Relative colorimetric with black point compensation Absolute colorimetric with optical brightener correction ICC profiles and linearizations separately selectable per color model / graphic object type MIM-Administration: Load ColorGATE Media Packages (*.cgm) Soft proof: Display a simulation of the ICC-link in the preview
Screening settings	<ul style="list-style-type: none"> Large selection of screening algorithms: ColorGATE smooth, Crispy screening, Floyd Steinberg etc. No ink below x % Blend optimizing PostScript screening with 16 spot functions included
Workflow	<ul style="list-style-type: none"> PortMonitor: Print from any Mac, Win, Unix or Linux application directly to ColorGATE Hotfolders for automatic output (virtual printer) 1 Hotfolder for an automatic workflow (RASTER & SELECT) Adjustable workflow settings Manual job import with Hotfolder setting assignment Drag-and-Drop Preview options: Job preview, job placing on output media, rotate job, zoom in-/out for preview, color correction Job Sorter: Sort your jobs by status, alphabetically, file- and output size, number of copies Duplicate jobs: Copy any job or link to an existing file Archiving of print files Freely definable scaling Saving of cut, registration and overlap markings CROPPING: CROPPING tool to select print areas Mirroring & rotation in 90°-steps AUTO ROTATE: Automatic placing for efficient media use Printing of freely definable text and job information Offset & centering Multiple copies; Only one Rip-process for printing several copies Output of color separations in 4 process colors or black AUTO TILING: Automatic paneling JOB-ACCOUNTING: Rip-time, printing time and area

PRODUCTIONSERVER⁴ PRO functions:

With the functions and modules of the **PRODUCTIONSERVER⁴ PRO** version shown here you can extend the **RASTER & SELECT** versions any time you want. You will find the various modules under the "additional options". Please consult your dealer for technical details.

Color Management

- Multi-color ICC-Engine**: calculation and output of data with spot colors
- Spectral-based linearization wizard with ink limitation option for primary colors and total ink laydown
- Linearization synchronization to match local linearization to original linearization
- Advanced MIM-(Media-Ink-Metamode) Technology
- MIM-Administration:
 - ... Create, copy and modify MIM-files (*.cgm)
 - ... Load **ColorGATE** Media Packages (*.cgm)
 - ... Save **ColorGATE** Media Packages (*.cgm)
- Spot color replacement in CMYK, LAB and with direct spectrophotometer integration selectively applicable to vectors and text, HKSTM color replacement tables included with HKSTM E, K, N and Z, optional Pantone[®] color replacement tables, alias assignment, administration of as many replacement tables and entries as desired. Compatible with color palettes of the leading application packages over new CxFormat.
- Interactive color correction tools for brightness, contrast, gamma and gradation, image preview before and after correction. Pipette tool supports image preview before correction, after correction

Workflow

- Second RIP and Printer Queue**: rip and print on a second printer
- Rip and print simultaneously**: prints a file whilst ripping
- Hotfolder**: unlimited Hotfolders for unlimited workflows
- VARIABLE TILING** with a free definition of any segment and overlap; Changes without re-ripping the printdata. Also prints cut and overlap markings.
- CONTAINER**: Automatic or manual placement of differing jobs (including from multi-page PDF and PostScript files), copying in Container, Container copies, TILING-CONTAINER arranges the segments of tiling jobs in a media-optimized manner. Positioning and arranging tools such as "magnetic" borders, guidelines and object edges.
- TWAIN**: interface to direct link with TWAIN-capable scanners and digital cameras
- Visual scaling**: positioning of a distance tool with input dialog for distance length after scaling

Additional options

- Photo & Fine Art Module**: Creation of grayscale images in "neutral" or with individual color effects, color tuner for printouts to compensate for ambient light; Contact sheet: automatic indexing and thumbnails incl. definable EXIF information, direct requests to external picture editing software.
- FotoFusion[®]** Front-end to create collages, photographic arrangements and posters.
- Profiler Module**: Assistant-guided ICC profile generation with free separation management for black use (start and maximum), overall color application quantity, black build-up (UCR/GCR) and correction function of optical brighteners. Optional Profiler Module bundled with GretagMacbeth Eye-One Pro color metrology device.
- Proofing Module**: For production of legally binding proofs per media standard (ISO 12647-2). Contains DeviceLink Generator, FOGRA media wedge 2.0, and control strip evaluation with recording function.
- Screen Module**: output of separate screen printing films (available from the second quarter of 2005).
- Additional RIP and Printer Queue**: expands the RIP and Printer Queue by a further software-supported printer for each.

Recommended system requirements (Minimum)

- Intel Pentium III or higher (Pentium II)
- 512 MB RAM (128 MB RAM)
- 40 GB Harddisk (10 GB Harddisk)
- Win 2000/XP
- LAN Adapter - TCP/IP



ColorGATE Digital Output Solutions GmbH
Göttinger Chaussee 115 · 30459 Hannover · Germany
Fon: +49 (0) 511 - 942 93-0 · Fax: +49 (0) 511 - 942 93-40
E-Mail: contact@colorgate.com · Web: www.colorgate.com

With compliments from your **ColorGATE** Partner